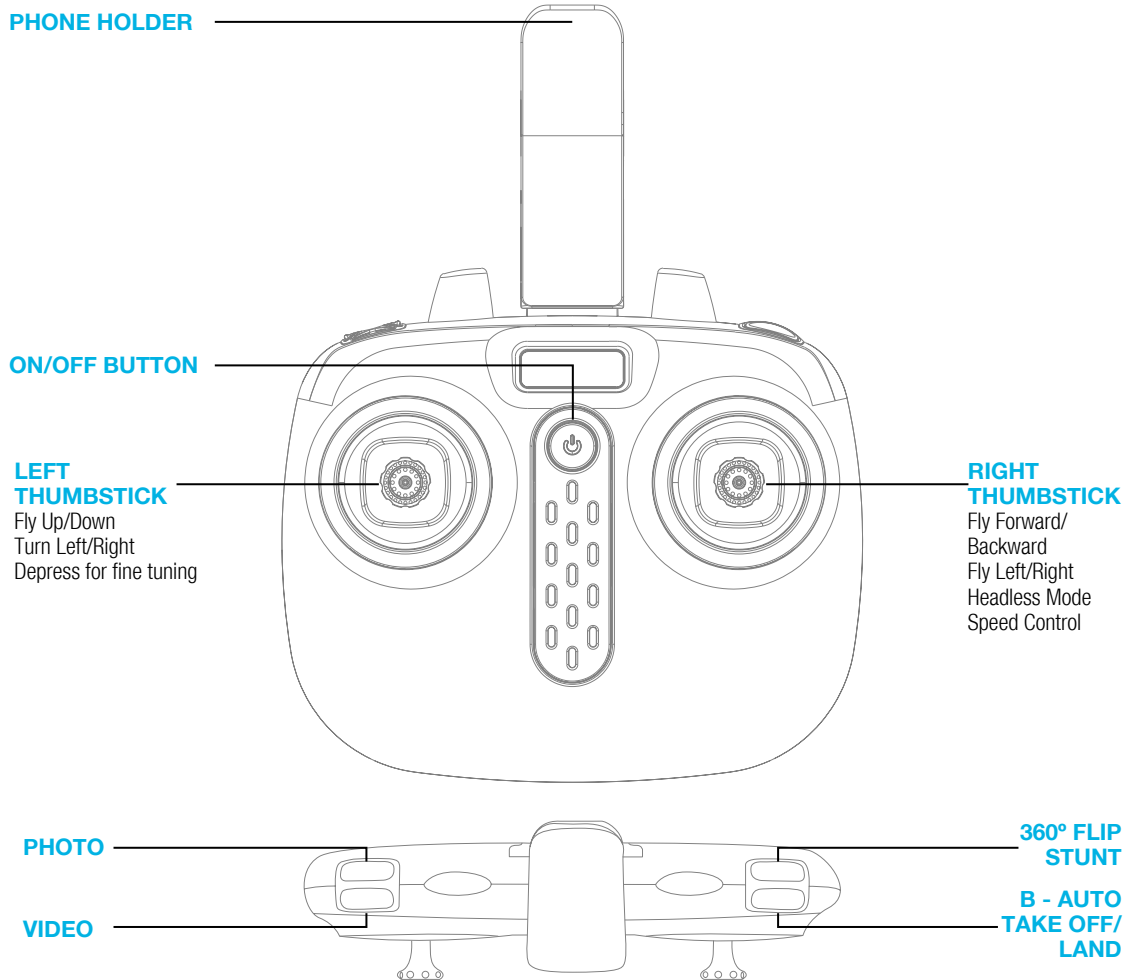


BALCO™ FPV HD CAMERA DRONE

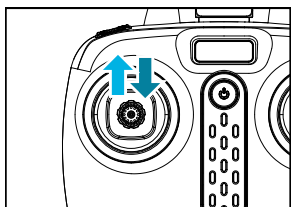
REMOTE CONTROL REFERENCE

Balco Lifestyle does not take any responsibility for the loss of the Balco FPV HD Camera Drone and it is NOT covered by warranty. We recommend that users test their drone in a safe indoor environment before attempting to fly the drone outdoors.

We highly recommend that you read the instruction manual in full before attempting to operate and fly the drone.

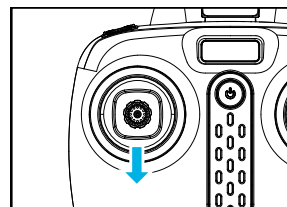


ENGAGE PROPELLERS



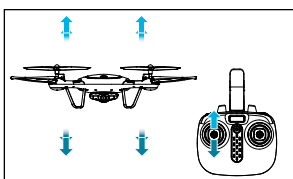
Push the left thumb stick up to the highest point and then allow the thumb stick to reset to the centre

SWITCH OFF PROPELLERS



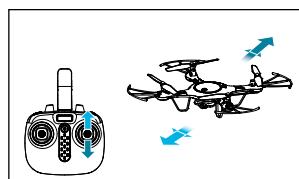
Push the left thumb stick down to the lowest level and hold for approximately 5 seconds until the drone has landed and powered down

FLIGHT



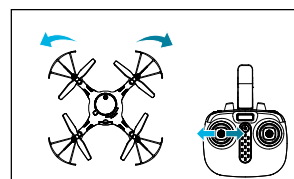
Hover Up & Down

Push the left thumb stick up or down to move the drone upwards or downwards



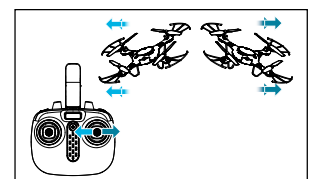
Forward & Backward

Push the right thumb stick up or down to move the drone forwards or backwards.



Turn Left & Right

Pull the left thumb stick left or right to turn the drone left or right.



Fly Sideways

Pull the right thumb stick left or right to move the drone to the left or right.

BALCO™ FPV HD CAMERA DRONE

GETTING STARTED GUIDE

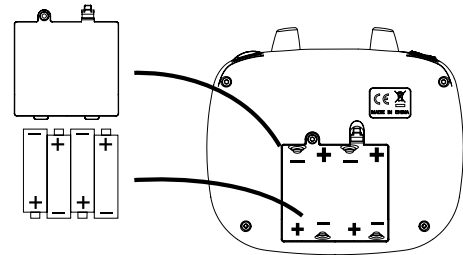
1 UNPACK

Unpack your Balco FPV HD Camera Drone and check that you have received all components as listed on page 9 of your manual.



2 INSTALL THE REMOTE CONTROL BATTERIES

Remove the battery cover and install the 4 x AA supplied batteries into the back of the remote control.



3 CHARGE & INSTALL DRONE BATTERY

Fully charge the drone's battery before use, using the included USB Charging Cable



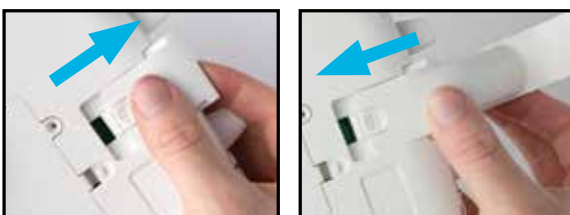
4 INSTALL CAMERA

Connect the camera wires to the plug port and insert the camera into the base of drone by twisting the camera 90 degrees until it clicks into place. The camera should always face forwards toward the head of the drone



5 OPTIONAL: INSTALL THE PHONE CLAMP TO USE YOUR PHONE

Slide out the cover on the remote control. Insert the Phone Clamp connector by sliding it down into place as illustrated



6 ATTACH PROPELLER GUARDS

Push the propeller guard into the slot and push the lever down until you hear a 'click'



7 PAIR THE REMOTE CONTROL TO THE DRONE & ENGAGE THE PROPELLERS

- Switch ON both the remote control and drone by pressing the ON/OFF buttons
- Move the left thumb stick up then down. You will hear two beeps and the ON/OFF buttons on both devices will then change to solid red to indicate pairing is successful
- To start the propellers, move the left and right thumb sticks inwards and hold for 2 seconds. Refer to the Instruction Manual for other take off methods.

8 OPTIONAL: DOWNLOAD THE FPV DRONE APPLICATION

- Use the QR Codes below, or search for 'Drone Go' to download the drone's application
- Switch ON both the remote control and drone
- On your phone, connect to WiFi Network 'FPV_WIFI_****'
- In the 'Drone Go' App, click the Start icon to enter the control interface



iOS App
(Version 8.0)



Android App
(Version 4.1)