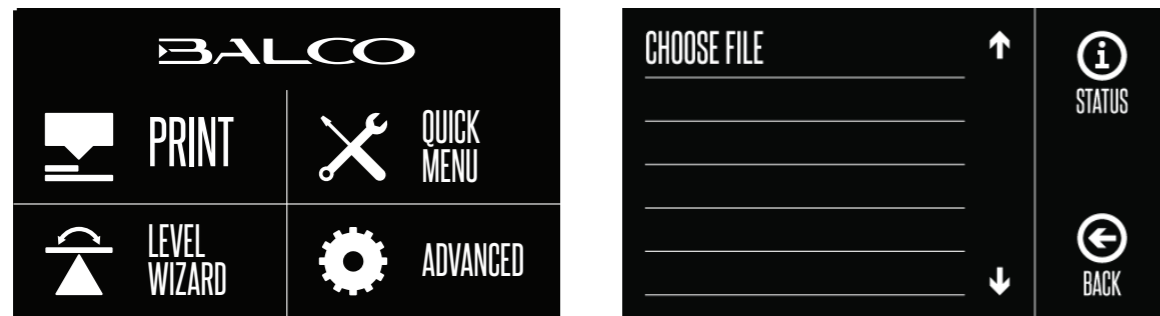


LOADING FILAMENT AND PRINTING A FILE

1. Turn on the 3D Printer with the Power Switch located at the back of the Printer
2. On the Main Screen, select **Quick Menu** -> **Change Filament** -> **Add Filament**
3. Select the desired type of Filament to be added. The Extruder will automatically be raised and your Printer will begin heating the Extruder to the correct temperature. When the temperatures are within a few degrees of the target, you are ready to insert the filament
4. Place the included filament onto the Spool holder. Carefully insert the end of the filament into the hole on the Extruder. The Extruder will begin to slowly pull the filament in. Once filament begins extruding, press **'Back'** to stop
5. Carefully remove the extruded filament from the Nozzle Head and ensure the Print Bed is clean
6. Insert the included SD card into the slot on the right side of the Printer. Select **'Print'** from Main Screen and choose your desired file from the list. You can now select one of our pre-loaded files below by navigating to, and selecting the file name



7. Once selected, your file will begin to load and your file status can be viewed on the touch screen. Your printer will automatically commence heating the Extruder and Print Bed to the correct printing range before commencing the print
8. Once your Printer has completed printing the file, the nozzle and Heated Print Bed will automatically commence cooling down. Once cooled, turn off your 3D printer and carefully remove the 3D printed object using the supplied Scraper and gently lifting the object with your hand



NOTE: Always take care when using the Scraper. Never use excessive force or scrape towards your hand.

NOTE: Always keep the Scraper as level as possible. Scraper can damage the print mat if not used correctly

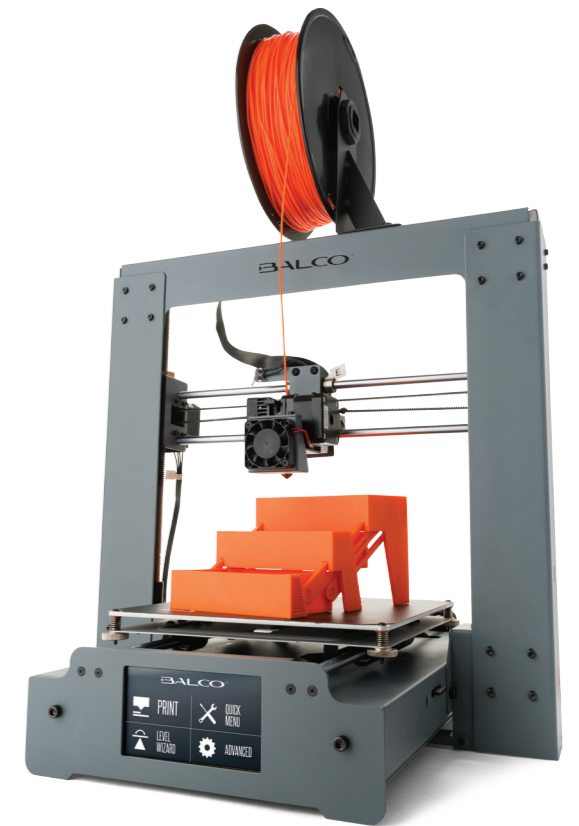
NOTE: If your file is not printing correctly, press the **'Stop'** Button to discontinue the print. Ensure the extruder is raised prior to removing the print off the Bed

NOTE: Immediately turn off the machine if any of the motors are jamming or forcing against the chassis

VERSION 1

BALCO™

3D PRINTER TOUCH GETTING STARTED GUIDE

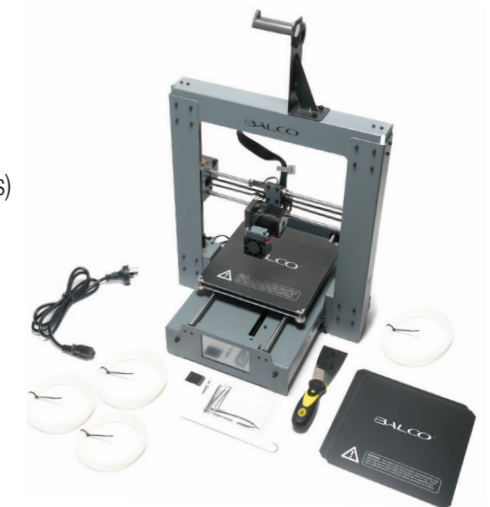


Congratulations on your purchase of the Balco 3D Printer Touch. You're now just moments away from printing your first 3D model. It's important that you follow these steps carefully to ensure correct setup of your 3D Printer.

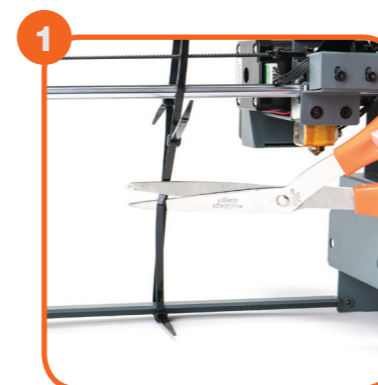
You can also visit balcolifestyle.com for step by step guides on unboxing and setup, levelling, filament installation and printing.

Package Contents:

- | | |
|---|--|
| 1 x Balco 3D Printer Touch (Extruder Tower, Heated Print Bed) | 1 x 100m PLA Filament |
| 1 x Filament Spool Holder | 3 x Print Bed Mats (1 on Print Bed and 2 spares) |
| 1 x Filament Spool Stand | 1 x 0.4mm Drill Bit |
| 1 x Power Cable | 1 x Extruder Cleaner |
| 1 x SD Card Class 10 | 6 x Rubber Feet |
| 1 x Scraper | 1 x Levelling Card |
| 1 x Replacement PTFE Tube | 1 x Instruction Manual |
| 1 x Hex Key Set | 1 x Getting Started Guide |
| 6 x Hex Bolts | 1 x Warranty Card |
| 2 x Cable Ties | |



CONSTRUCT AND CONNECT



1 Place the Extruder Tower and Heated Print Bed on a clean, level work space. Carefully remove the cable tie that holds the extruder in place.

NOTE: Do not pull on the black cable
NOTE: Ensure printer setup workspace is at least 1m x 1m



2 Insert the Heated Print Bed Controller carefully through the legs of the Extruder Tower and align the bolt holes on each side. Using the Hex Wrench, insert and tighten the two bolts on the bottom of each Extruder Tower
TIP: Raise the extruder and angle the bed for easier inserting through the Extruder Tower

CONSTRUCT AND CONNECT (CONT.)



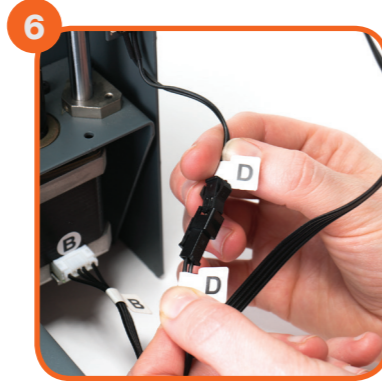
Insert the long cable connector marked 'A' into the motor connector of the Extruder Tower marked 'A'



Insert the short cable connector marked 'B' into the motor connector of the Extruder Tower marked 'B'



Insert the white connector marked 'C' into the motor connector of the Extruder Tower marked 'C'



Insert the black connector marked 'D' into the black connector of the Extruder Tower marked 'D'



Insert one end of the black cable connector marked 'E' into the black connector of the Extruder Tower marked 'E'. Insert the other end to the black connector marked 'E' into the black connector on the side of the Heated Print Bed marked 'E'



Attach the upper arm of the filament spool holder by unscrewing the end cap, then reattaching. Position the Filament Spool Holder Stand on top of the Extruder Tower, then insert the bolts and tighten with the Hex Wrench



Ensure the power switch is in the OFF position, then insert the Power Supply Cable into the back of the 3D Printer Base. Insert the other end into a nearby mains power outlet. Turn on the power outlet, then turn on the power switch at the back of the 3D Printer Base



Wait for the printer to initialise, with the home screen shown on the Touch Screen. You have successfully setup your Balco 3D Printer Touch

LEVELLING THE PRINT BED

IMPORTANT NOTE: Levelling the bed is an extremely important step and if it is not done correctly every time, your prints will fail or be of poor quality

Before you begin to level the Heated Print Bed:

Ensure the springs on all 4 corners of the Heated Print Bed are tightened all the way to the bottom by turning each thumbwheel anti-clockwise until you can no longer turn them. This reduces the distance between the 2 plates of the print bed to a minimum. Wipe the top of the Heated Print Bed with a clean, lint-free cloth to ensure no dust particles or other objects are on the Heated Print Bed

Check the Z axis alignment. The X rail (holding the Extruder) should be parallel to the Heated Print Bed. If it is not, manually rotate individual z-axis stepper motors on the bottom of both shafts to adjust. Place a Hex Wrench on the z-axis rod and run it across the Heated Print Bed to check the z-axis is aligned horizontally

1 Press 'Level Wizard' on the touch screen panel and follow the steps as indicated

